

# MDR-U

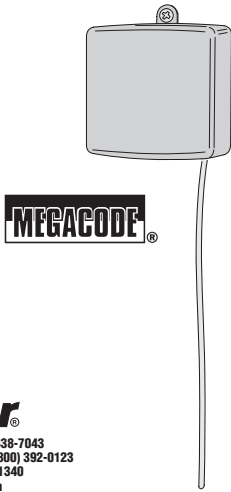
## Universal MegaCode™ Receiver

For Garage Door Operator  
Remote Control

### Installation Instructions

# Linear

(760) 438-7000 • FAX (760) 438-7043  
USA & Canada (800) 421-1587 & (800) 392-0123  
Toll Free FAX (800) 468-1340  
www.linearcorp.com



MEGACODE



**CAUTION**  
**RISK OF ELECTRICAL SHOCK**  
**DO NOT OPEN**



#### EXPLANATION OF GRAPHIC WARNING SYMBOLS



This symbol is intended to alert the user to the presence of un-insulated "dangerous voltage" within the product's enclosure that may be of sufficient magnitude to constitute a risk of electric shock.

\* **WARNING!** To reduce the risk of fire or electric shock, do not expose this device to rain, water, or wet locations.



This symbol is intended to alert the user to the presence of important operating and maintenance (Servicing) instructions in the literature accompanying the device.

## IMPORTANT SAFETY INSTRUCTIONS



### TO REDUCE THE RISK OF SEVERE INJURY OR DEATH

1. READ AND FOLLOW ALL INSTALLATION INSTRUCTIONS
2. NEVER LET CHILDREN OPERATE, OR PLAY WITH DOOR CONTROLS! KEEP REMOTE CONTROL AWAY FROM CHILDREN!
3. ALWAYS KEEP MOVING DOOR IN SIGHT AND AWAY FROM PEOPLE AND OBJECTS UNTIL IT IS COMPLETELY CLOSED. NO ONE SHOULD CROSS THE PATH OF THE MOVING DOOR.
4. NEVER GO UNDER A STOPPED, PARTIALLY OPEN DOOR.



TO REDUCE THE RISK OF ELECTRIC SHOCK, DISCONNECT POWER TO THE RECEPTACLE BEFORE INSTALLING OR REMOVING THE UNIT. WHEN REMOVING RECEPTACLE COVER SCREW, COVER MAY FALL ACROSS PLUG PINS OR RECEPTACLE MAY BECOME DISPLACED. USE ONLY WITH DUPLEX RECEPTACLE HAVING CENTER SCREW. SECURE UNIT IN PLACE BY RECEPTACLE COVER SCREW.

## IMPORTANT SAFETY INSTRUCTIONS

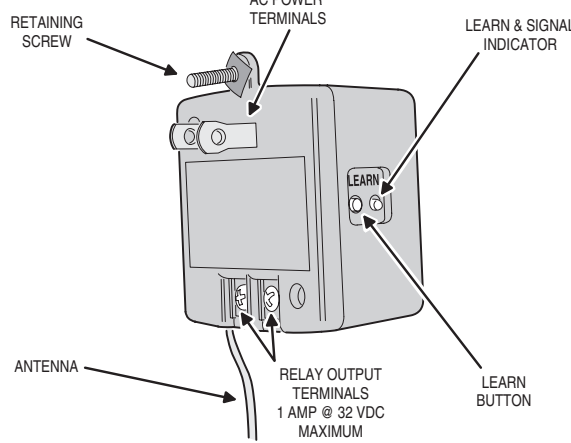
1. Read these instructions.
2. Keep these instructions.
3. Heed all warnings.
4. Follow all instructions.
5. Do not use this apparatus near water.
6. Clean only with dry cloth.
7. Do not install near any heat sources such as radiators, heat registers, stoves, or other apparatus (including amplifiers) that produce heat.
8. Do not defeat the safety purpose of the polarized or grounding-type plug. A polarized plug has two blades with one wider than the other. A grounding type plug has two blades and a third grounding prong. The wide blade or the third prong are provided for your safety. If the provided plug does not fit into your outlet, consult an electrician for replacement of the obsolete outlet.
9. Unplug this apparatus during lightning storms or when unused for long periods of time.
10. Refer all servicing to qualified service personnel. Servicing is required when the apparatus has been damaged in any way, such as power-supply cord or plug is damaged, liquid has been spilled or objects have fallen into the apparatus, the apparatus has been exposed to rain or moisture, does not operate normally, or has been dropped.

### PRODUCT DESCRIPTION

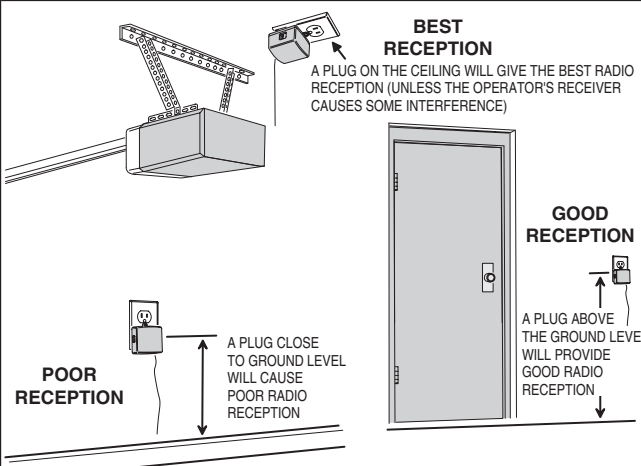
The Model MDR-U Universal MegaCode™ Receiver is designed for use as a replacement radio control receiver in garage door operator installations. The receiver is self-contained, not requiring an external transformer or power from the garage door operator. The receiver plugs directly into a 120 VAC outlet. A retaining screw is provided to secure the receiver to the outlet.

Two screw terminals on the receiver are for connection to the garage operator's pushbutton input. A dry contact, Form "A", relay in the receiver will provide a .5-second closure across the terminals when the receiver activates. A flexible wire antenna extends from the receiver's case to provide maximum radio reception. MegaCode™ receivers and transmitters do not contain a typical "coding switch". Each transmitter is pre-set at the factory to a unique code. The receiver is programmed by sending a signal from the transmitter, storing the transmitter's code into the receiver's memory. The receiver will retain its memory, even without power. The receiver will activate only from these "memorized" transmitters. Each MDR-U receiver can be programmed to activate from up to ten MegaCode™ transmitters. The learn button and learn indicator are used for entering and erasing the transmitters in the receiver's memory. The learn indicator also displays signals being received and can be used for troubleshooting.

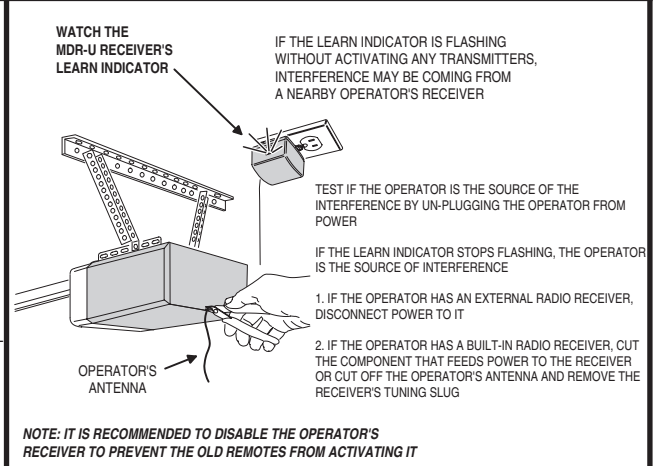
### COMPONENT LOCATIONS



### DETERMINE THE BEST RECEIVER LOCATION

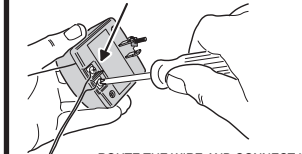


### CHECK FOR INTERFERENCE FROM OTHER RECEIVERS

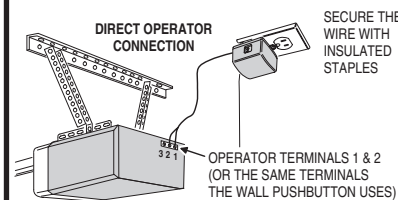


### CONNECT THE RECEIVER TO THE OPERATOR

CONNECT 2-CONDUCTOR WIRE TO THE MDR-U RECEIVER RELAY OUTPUT TERMINALS



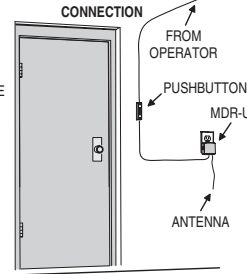
ROUTE THE WIRE AND CONNECT IT TO EITHER THE WALL PUSHBUTTON OR DIRECTLY TO THE DOOR OPERATOR (POLARITY NOT IMPORTANT)



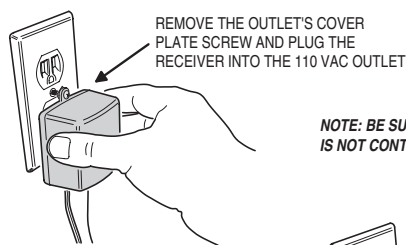
**DISCONNECT POWER TO THE GARAGE DOOR OPERATOR BEFORE PROCEEDING**

**UL NOTE: ALL LOW VOLTAGE CLASS 2 CABLE USED WITH THE OPERATOR MUST BE UL LISTED TYPE CL2, CL2P, CL2R, OR CL2X OR OTHER CABLE WITH EQUIVALENT OR BETTER ELECTRICAL, MECHANICAL, AND FLAMMABILITY RATINGS**

#### WALL PUSHBUTTON CONNECTION

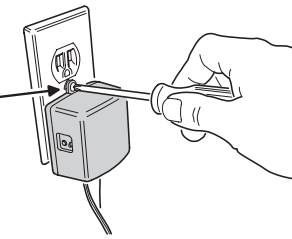


### INSTALL THE RECEIVER



**NOTE: BE SURE THAT THE OUTLET IS NOT CONTROLLED BY A WALL SWITCH**

SECURE THE RECEIVER TO THE OUTLET WITH THE RETAINING SCREW



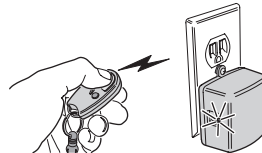
### PROGRAM AND TEST THE RECEIVER

#### ADDING TRANSMITTERS

1. PRESS AND RELEASE THE LEARN BUTTON
2. THE LEARN INDICATOR WILL LIGHT IF THERE'S ROOM IN MEMORY (UP TO 10 TRANSMITTERS WILL FIT)
3. ACTIVATE THE TRANSMITTER WHILE THE INDICATOR IS LIT (WITHIN 15 SECONDS)
4. INDICATOR FLASHES
5. REPEAT STEPS FOR ADDITIONAL TRANSMITTERS



**TEST RECEIVER**  
ACTIVATE EACH TRANSMITTER AND VERIFY THAT THE RECEIVER AND DOOR OPERATOR ACTIVATES



#### ERASING TRANSMITTERS

1. PRESS AND HOLD DOWN THE LEARN BUTTON
2. THE LEARN INDICATOR WILL FLASH COUNTING THE NUMBER OF TRANSMITTERS IN MEMORY
3. CONTINUE HOLDING DOWN THE LEARN BUTTON
4. 5 SECONDS AFTER THE COUNT THE INDICATOR WILL FLASH ONCE SHOWING THE MEMORY ERASURE
5. RELEASE THE BUTTON, THE UNIT ENTERS LEARN MODE FOR 15 SECONDS



### LINEAR LIMITED WARRANTY

This Linear product is warranted against defects in material and workmanship for twelve (12) months. The Warranty Expiration Date is labeled on the product. **This warranty extends only to wholesale customers** who buy direct from Linear or through Linear's normal distribution channels. **Linear does not warrant this product to consumers.** Consumers should inquire from their selling dealer as to the nature of the dealer's warranty, if any. **There are no obligations or liabilities on the part of Linear Corporation for consequential damages arising out of or in connection with use or performance of this product or other indirect damages with respect to loss of property, revenue, or profit, or cost of removal, installation, or reinstallation.** All implied warranties, including implied warranties for merchantability and implied warranties for fitness, are valid only until Warranty Expiration Date as labeled on the product. **This Linear Corporation Warranty is in lieu of all other warranties express or implied.** All products returned for warranty service require a Return Product Authorization Number (RPA#). Contact Linear Technical Services at 1-800-421-1587 for an RPA# and other important details.

#### IMPORTANT !!!

Linear radio controls provide a reliable communications link and fill an important need in portable wireless signaling. However, there are some limitations which must be observed.

- For U.S. installations only: The radios are required to comply with FCC Rules and Regulations as Part 15 devices. As such, they have limited transmitter power and therefore limited range.
- A receiver cannot respond to more than one transmitted signal at a time and may be blocked by radio signals that occur on or near their operating frequencies, regardless of code settings.
- Changes or modifications to the device may void FCC compliance.
- Infrequently used radio links should be tested regularly to protect against undetected interference or fault.
- A general knowledge of radio and its vagaries should be gained prior to acting as a wholesale distributor or dealer, and these facts should be communicated to the ultimate users.
- This device complies with FCC Part 15 and Industry Canada Rules and Regulations. Operation is subject to the following two conditions: (1) This device may not cause harmful interference, and (2) this device must accept any interference received, including interference that may cause undesired operation.