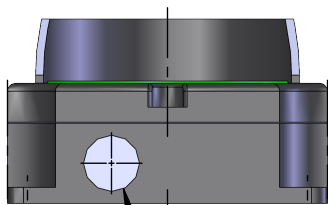


Ø 7/8" REAR PUNCH-OUT PROVISION



Ø 7/8" BOTTOM PUNCH-OUT PROVISION

VOLTAGE: 12-24V AC/DC  
 AMPERAGE: 75 mA @ 24V  
 150 mA @ 12V  
 3 WIRE: RED/COM/GREEN

REV	BY	DESCRIPTION	ECN #	DATE
REVISIONS				

CUSTOMER APPROVAL FOR MANUFACTURING

NAME: \_\_\_\_\_

SIGNATURE: \_\_\_\_\_

DATE: \_\_\_\_\_

AFTER APPROVAL PLEASE RETURN THIS DRAWING TO **BLUE GIANT**

THE INFORMATION CONTAINED HEREIN IS THE SOLE PROPERTY OF BLUE GIANT EQUIPMENT CORPORATION. ANY REPRODUCTION IN PART OR AS A WHOLE WITHOUT THE WRITTEN PERMISSION OF BLUE GIANT EQUIPMENT CORPORATION IS PROHIBITED.

UNLESS OTHERWISE SPECIFIED:

DO NOT SCALE DRAWING  
 DIMENSIONS ARE IN INCHES (Millimetres)  
 TOLERANCES APPLY AS SHOWN BELOW

FRACTIONAL	± 1/32
1 PLACE DECIMAL	± 0.1
2 PLACE DECIMAL	± 0.01
3 PLACE DECIMAL	± 0.005
ANGLES - MACHINED	± 0.5°
ANGLES - BEND	± 2°

MATERIAL <b>PLASTIC</b>	
MATERIAL CODE	
SURFACE ROUGHNESS AS IS	
COATING AS IS	
FIRST USED ON	THIRD ANGLE PROJECTION
DRAWN _____ DATE 2019-12-13	
CHECKED _____ DATE	

**BLUE GIANT**®

**LED TRAFFIC LIGHT, BLACK**

SIZE	DRAWING NO	REV
<b>A</b>	<b>032-806</b>	<b>-</b>
SCALE 1:3	WEIGHT 3.347 lbs	SURFACE AREA 178.520 sq in
SHEET 1 OF 1		