

GENSHIELD™ SERIES

Tough to the core™

GenShield™ 16

GenShield™ 18

GenShield™ 20



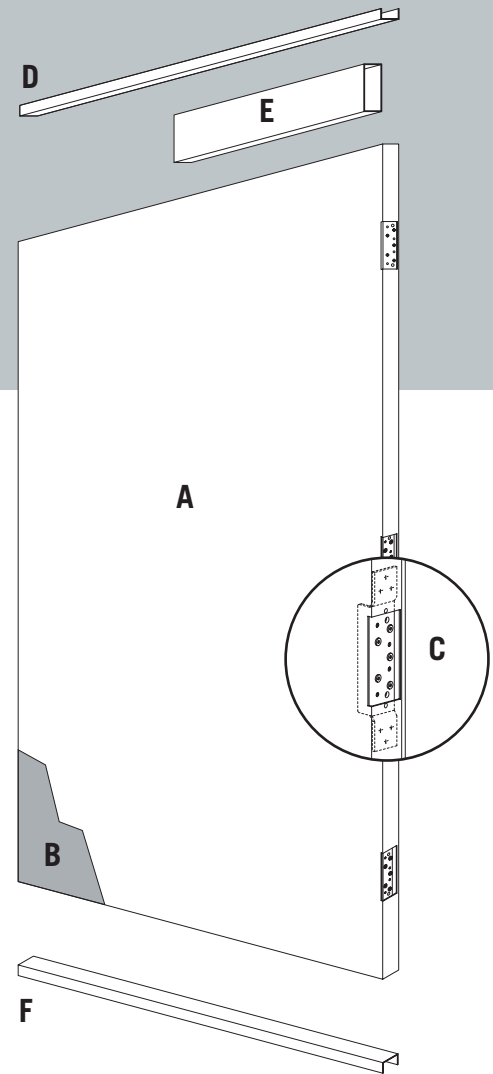
The **GenShield Series** is a temperature rise door designed to impede and limit heat transmission generated from a fire. The core's excellent heat retardant characteristic protects the unexposed area thus allowing ample time for safe evacuation. In accordance to temperature rise standards, the unexposed door surface will reach a maximum of 250°F during the first 30 minutes of a fire and 450°F after 60 minutes. Standard doors are 1¾ in. (45 mm) thick and are available in 16, 18, and 20 gauge galvanized steel.

General Specifications

- Door faces are flush and free of any joints, welds or seams.
- Longitudinal door edges are interlocked with mechanical seam and reinforced with epoxy adhesive (seamless edge optional).
- Door edges are beveled 1/8" (3 mm) in 2" (50 mm).
- Door hinge reinforcements are prepared for standard weight 4½" x 4½" (114 mm x 114 mm) hinges which can easily be converted to accommodate heavy weight hinges.

Door Construction

- A Door face sheet, galvanized steel.
- B Core (composite board).
- C 10 gauge high frequency dual purpose hinge reinforcement with return bend for added strength. Can easily be converted to accommodate heavy weight hinges.
- D 18 gauge inverted top channel projection welded to door skins and tack welded at each corner for extra rigidity.
- E 18 gauge door closer reinforcement box.
- F 18 gauge inverted bottom channel projection welded to door skins and tack welded at each corner for extra rigidity.

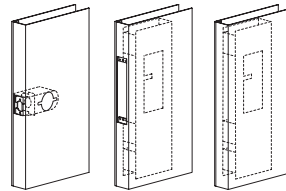


Standard Lock Preparations

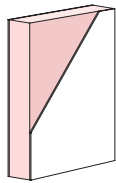
161 cylindrical lock assembly reinforcement with added barrel support projection welded to door edge, in accordance with ANSI A115.2 requirements.

86 edge mortise lock preparation reinforcement box with integrated lock support, in accordance with ANSI A115.1 requirements.

Rim panic reinforcement box for surface mounted exit device application.



Available Core



Composite board

Fire Labels

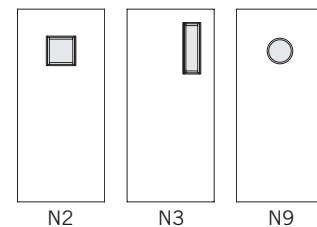
GenShield Series fire labeled doors are approved by both Intertek Testing Services (ITS Warnock Hersey) and Underwriters Laboratories (UL) Fire Labeling Programs. Doors can be fire labeled for up to 3 hours and must be installed in an equivalent fire labeled frame with approved fire listed hardware. For fire labeling restrictions and limitations refer to Gensteel's Fire Labeling Guide for Hollow Metal Doors.



Fire Labeling Guide for Hollow Metal Doors		
Maximum Door Opening Size:		
Single Opening 4'0" x 8'0"		Double Door Opening 8'0" x 8'0"
Minimum Gauge	Rating	Allowable Glass Area
20	3 h	Nil
20	1½ h	100 in. ²

Recommended Uses	Standard Duty	Medium Duty	Heavy Duty
GenShield™ 16			X
GenShield™ 18		X	X
GenShield™ 20	X	X	

Lites



As a result of Gensteel's ongoing quest for improvement, technical specifications are subject to change without notice.

G-10 WARRANTY

Gensteel doors come with an unrivalled 10-year warranty against delamination.



Head Office & Manufacturing Plant
4950 Hickmore, St. Laurent, Quebec, Canada H4T 1K6

Toll free: 1-866-GENSTEEL (436-7833)
Telephone: (514) 733-3562 Fax: (514) 733-1932

Manufacturing Plant: Cornwall, Ontario
U.S. Manufacturing Plant: Plattsburgh, NY

www.gensteeldoors.com

™ Trademarks of Gensteel Doors

