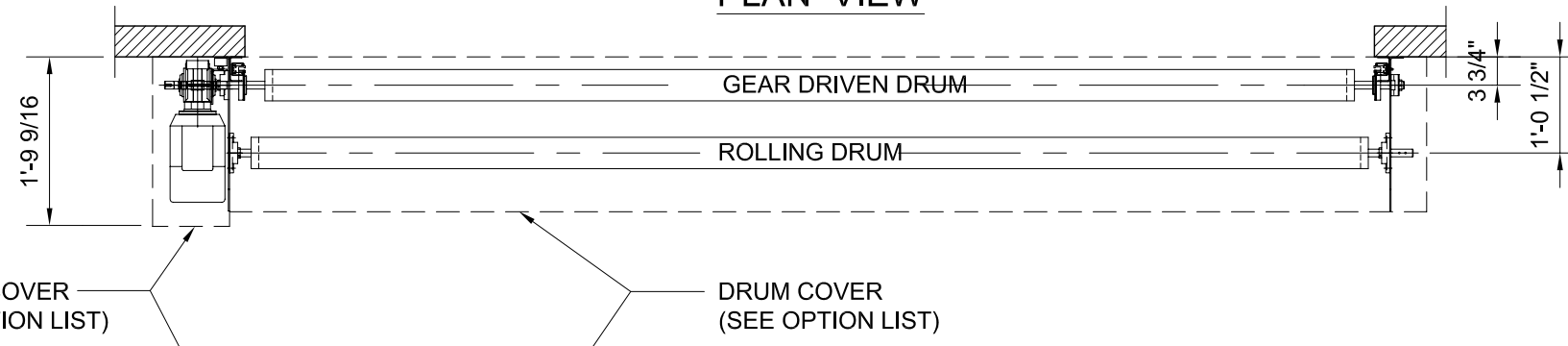


MINIMUM SPACE REQUIRED

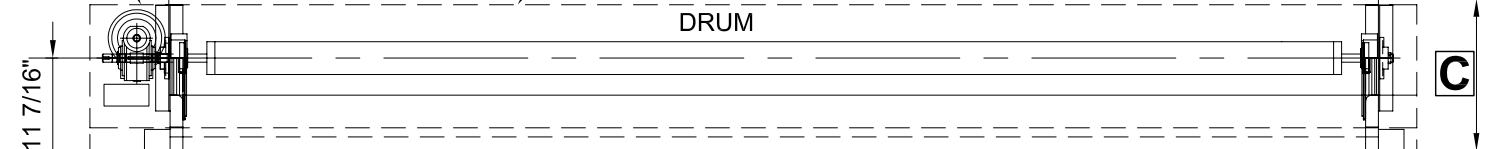
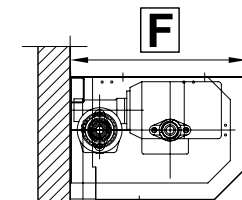
C = 19 11/16"
 D = 4 3/4"
 E = 11"
 F = 21 1/2"

PLAN VIEW



MOTOR COVER (SEE OPTION LIST)
 DRUM COVER (SEE OPTION LIST)

DRUM



DOOR CURTAIN IN REINFORCED PVC (ACA 18-PP52)

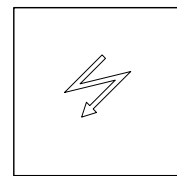
PANEL COLOR:

SIDE GUIDE

COUNTER WEIGHT COVER

COUNTER WEIGHT

4'-0"



5'-3"

ELECTRIC PHOTO-EYE

ELECTRIC PHOTO-EYE

OPENING HEIGHT

LOOP SEAL WITH WIRELESS REVERSING EDGE

+/- 7"

1'-0"

3 1/8"
 6 11/16"

OPENING WIDTH

ELEVATION VIEW - LEFT

ELEVATION VIEW - FRONT

ELEVATION VIEW - RIGHT

DOOR POST (U PROFILE)
 3 1/8" X 1 9/16" X 1/8"

DOOR TYPE.: M2 BASIC - LEFT HAND MOTOR			
DOOR NO.:	LOCATION:	OPENING SIZE (W X H):	MIN. HEADROOM REQUIRED:

DYNACO
 HIGH PERFORMANCE DOORS
 TEL. (800) 459 1930 FAX. (800) 459 1960

PROJECT TITLE		DATE:
ADDRESS (CITY, STATE)		01/08/2009
QUOTE NUMBER: XXXXXXXXXXXX		SCALE:
DEALER: XXXXXXXXXXXX		1/2" = 1'-0"
REGIONAL MANAGER:	CONTACT NUMBER:	FILE NO.:
XXXXXXXXXXXX	(XXX) XXX-XXXX	M2-LH

SHEET NO.
1 OF 1