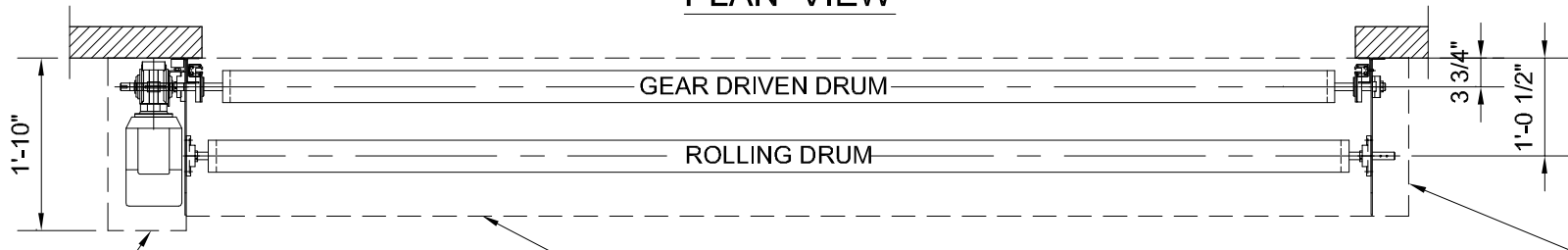
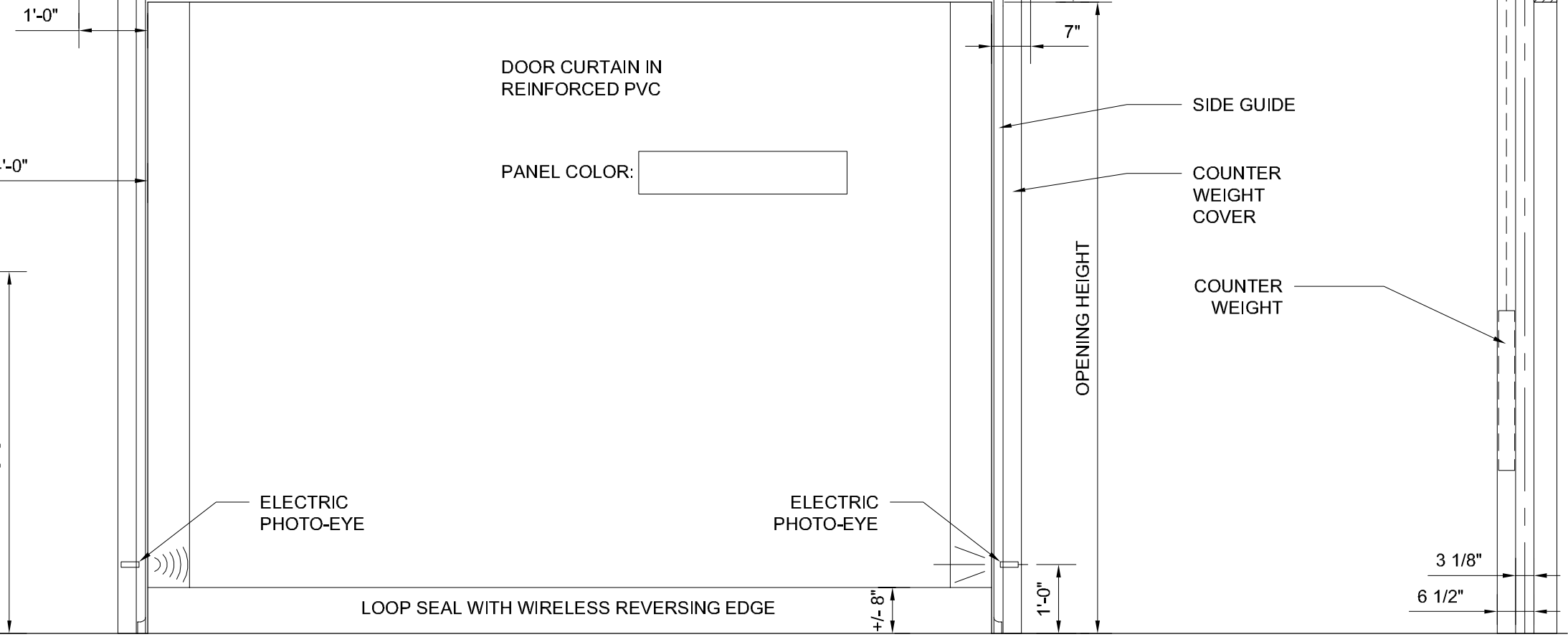
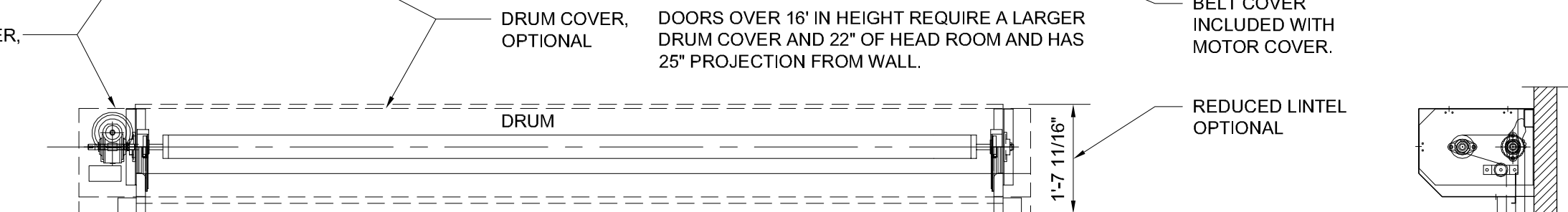


PLAN VIEW



MOTOR COVER, OPTIONAL
 DRUM COVER, OPTIONAL
 DOORS OVER 16' IN HEIGHT REQUIRE A LARGER DRUM COVER AND 22" OF HEAD ROOM AND HAS 25" PROJECTION FROM WALL.
 BELT COVER INCLUDED WITH MOTOR COVER.



DOOR CURTAIN IN REINFORCED PVC

PANEL COLOR:

SIDE GUIDE

COUNTER WEIGHT COVER

COUNTER WEIGHT

OPENING HEIGHT

LOOP SEAL WITH WIRELESS REVERSING EDGE

OPENING WIDTH

ELECTRIC PHOTO-EYE

ELECTRIC PHOTO-EYE

1'-7 3/4"

1'-10"

3 3/4"

1'-0 1/2"

1'-0"

1'-7 11/16"

7"

4'-0"

5'-3"

5 1/2"

+/- 8"

1'-0"

3 1/8"

6 1/2"

DOOR POST (U PROFILE)
 3 1/8" X 1 9/16" X 1/8"

ELEVATION VIEW - LEFT

ELEVATION VIEW - FRONT

ELEVATION VIEW - RIGHT

DOOR TYPE.: M2 ALL WEATHER - LEFT HAND MOTOR			
DOOR NO.:	LOCATION:	OPENING SIZE (W X H):	MIN. HEADROOM REQUIRED:

DYNACO
 HIGH PERFORMANCE DOORS
 TEL. (800) 459 1930 FAX. (800) 459 1960

PROJECT TITLE	
ADDRESS (CITY, STATE)	
QUOTE NUMBER:	XXXXXXXXXX
DEALER:	XXXXXXXXXX
REGIONAL MANAGER:	CONTACT NUMBER:
XXXXXXXXXX	(XXX) XXX-XXXX

DATE:	01/08/2009
SCALE:	1/2" = 1'-0"
FILE NO.:	M2-ALLWTHR-LH